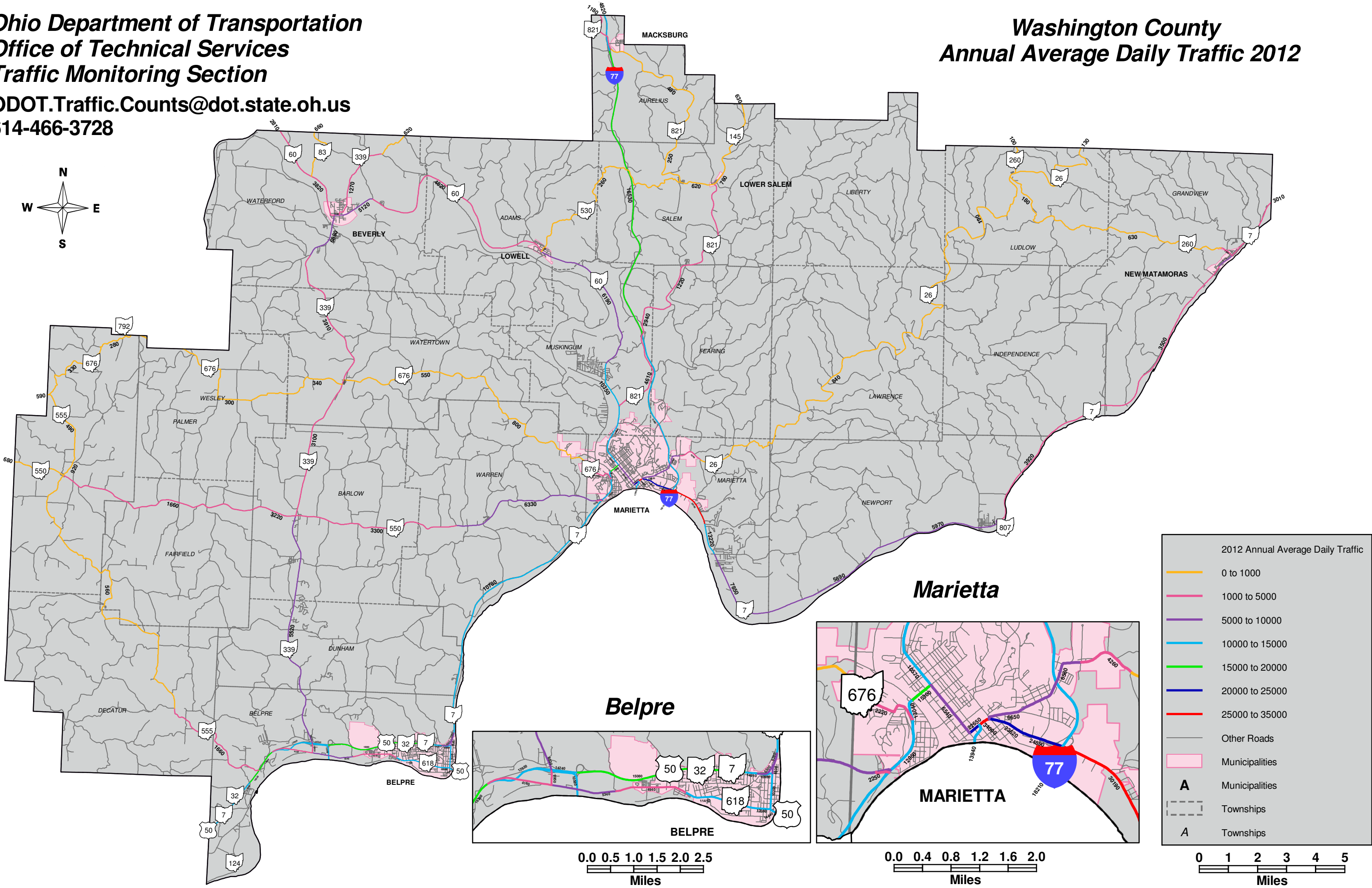
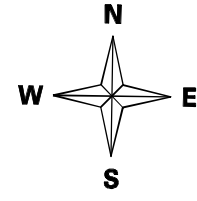


**Ohio Department of Transportation  
Office of Technical Services  
Traffic Monitoring Section**

**ODOT.Traffic.Counts@dot.state.oh.us  
614-466-3728**

**Washington County  
Annual Average Daily Traffic 2012**



**2012 Annual Average Daily Traffic**

- 0 to 1000
- 1000 to 5000
- 5000 to 10000
- 10000 to 15000
- 15000 to 20000
- 20000 to 25000
- 25000 to 35000
- Other Roads
- Municipalities
- A** Municipalities
- Townships
- A** Townships

